



COMPREHENSIVE, CONNECTIVE DESIGN

Stephen C. Parsons, AIA, NCARB, LEED AP

Planning, Design, and Documentation

REVIT / AutoCAD / Photoshop

Civic, Educational, Housing, Mixed Use

CIVIC / INSTITUTIONAL PROJECTS

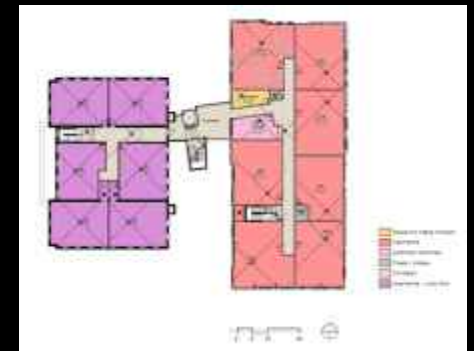
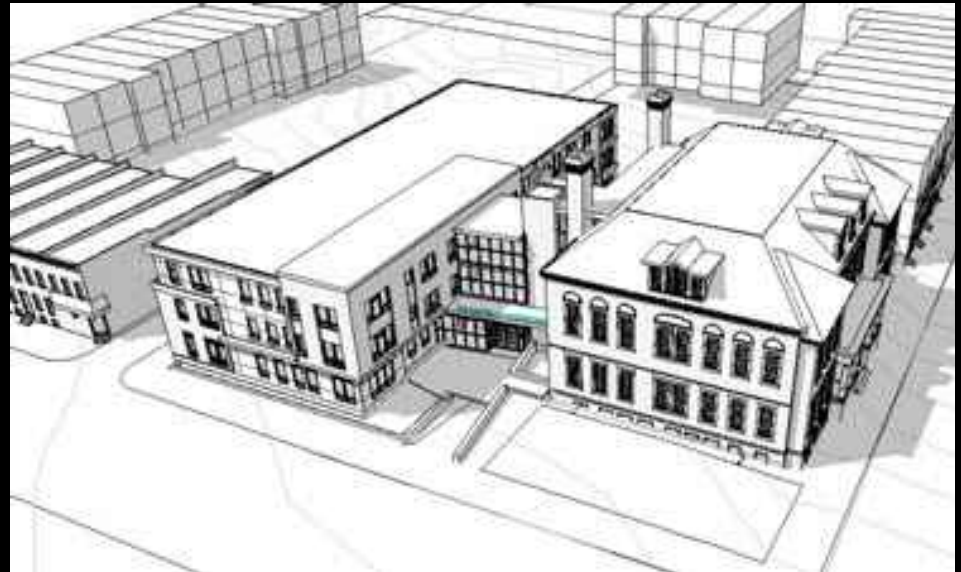
- Westport Urban Design Study, Baltimore Neighborhood Design Center
- Dayspring Square, Historic East Baltimore Action Committee - project architect
- Baltimore County Public Library, Cockeysville Branch - project designer
- Hartford Public Safety Complex - senior designer
- Greenwich Public Safety Complex – project designer
- Corbin / Pinnacle Housing, New Britain – master planner
- Multiple Public Safety Studies/Proposals
- Brass Trail Gateway Corridor – originator, project architect
- Waterbury Brass Mill Center – design review, community advocate
- Silas Bronson Library – master planner
- Waterbury Community Projects – master planner, project architect
- US Naval Base at Newport: on-call projects – project architect
- US Postal Service in CT: on-call projects



with Hord Coplan Macht

Dayspring Square

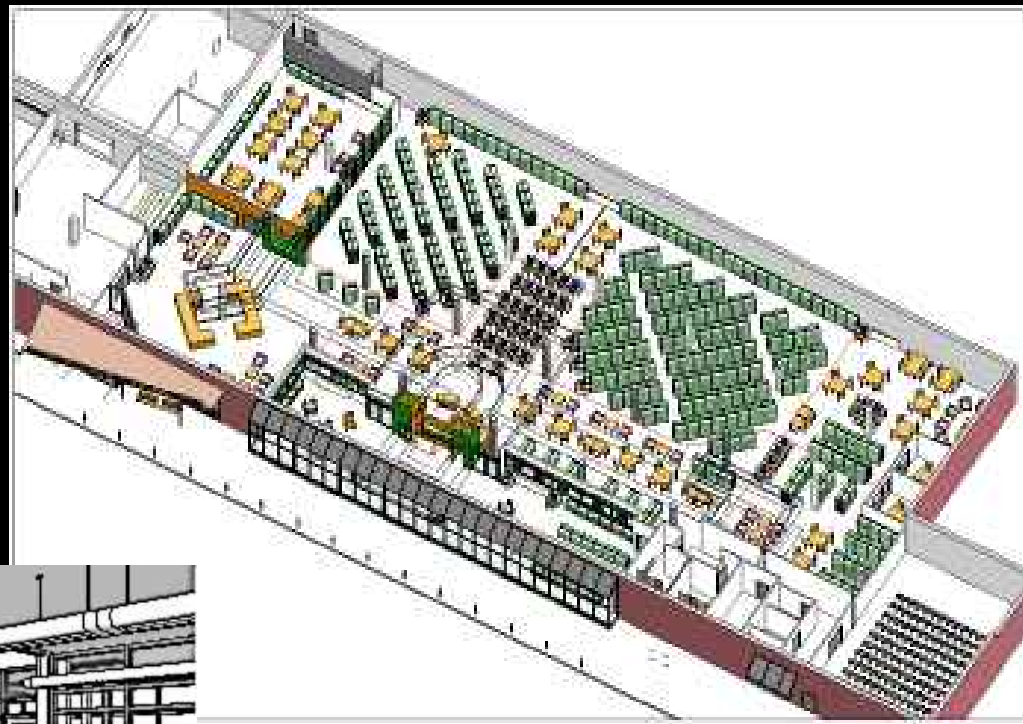
Historic East Baltimore Community Action Coalition. Project Architect for renovation an existing, vacant 1895 school structure and construction of a new structure adjacent connected with a fully enclosed link at all levels. The program provides housing, counselling and support services for women and their children affected by substance abuse.



with Hord Coplan Macht

Cockeysville Branch, Baltimore County Public Library

Cockeysville MD: Project Designer for expansion and reconfiguration of a popular 24,000sf library facility. Extensively reorganized collection and seating capacity and public and staff spaces to cleaner, more open layout, with new focus on children's programming.



General Shelving Unit Type	Count	Length	Area per Unit	LF
Children's Area				
Bookshel/ Double Faced 40"	28	2'-0"	5	488'-0"
Bookshel/ Single Faced 40"	16	2'-0"	2	144'-0"
				632'-0"
Fiction				
Bookshel/ Double Faced 60"	54	2'-0"	10	1020'-0"
Bookshel/ Single Faced 60"	14	2'-0"	2	210'-0"
				1230'-0"
Juvenile Area				
Bookshel/ Double Faced 60"	16	2'-0"	10	480'-0"
Bookshel/ Single Faced 60"	10	2'-0"	2	210'-0"
				690'-0"
Library/Circulation				
Bookshel/ Double Faced 60"	2	2'-0"	10	60'-0"
Bookshel/ Single Faced 40"	10	2'-0"	2	210'-0"
Bookshel/ Single Faced 60"	13	2'-0"	2	276'-0"
				546'-0"
Non-Fiction/ Biography				
Bookshel/ Double Faced 60"	20	2'-0"	10	1200'-0"
Bookshel/ Single Faced 60"	21	2'-0"	2	420'-0"
				1620'-0"
Teen Area				
Bookshel/ Double Faced 60"	5	2'-0"	10	300'-0"
Bookshel/ Single Faced 60"	5	2'-0"	2	110'-0"
				410'-0"
				720'-0"



"It's magnificent," said Baltimore County Executive Jim Smith shortly before branch manager Mollie Fein officially declared the branch open to the public.

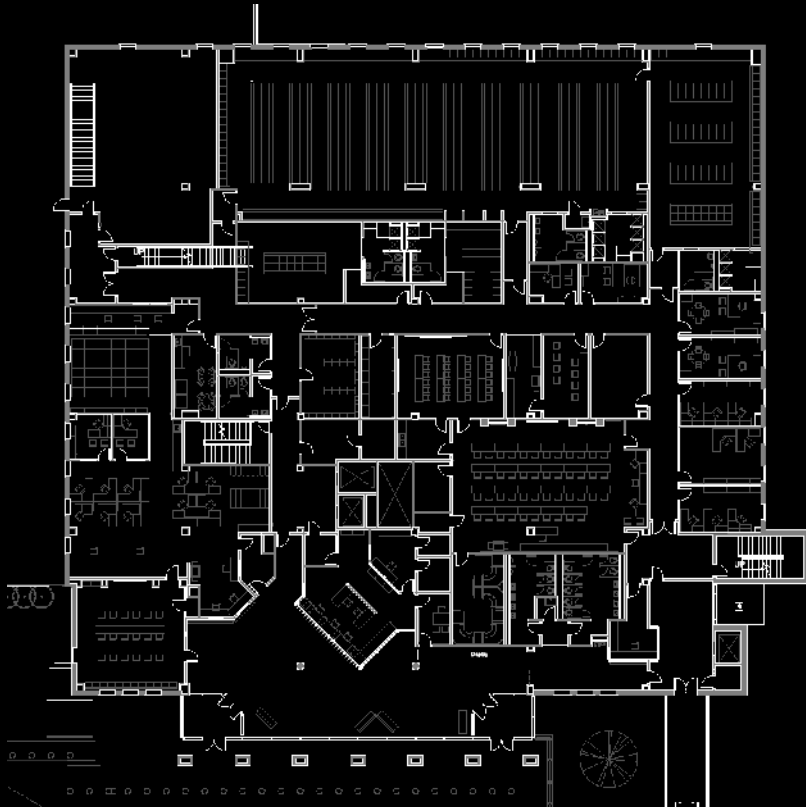
"I think it's great," 2nd District County Council member Bryan McIntire said. "There must be library engineers who lay it out so nicely. It's a pleasant, airy atmosphere."



"Gosh, how could you not be impressed?" said John Holman, a member of the Baltimore County Public Library Board of Trustees. "It's a showcase."

with JCI Architecture

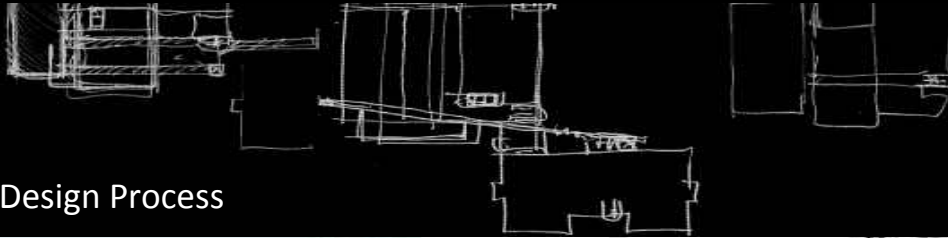
Hartford Public Safety Complex



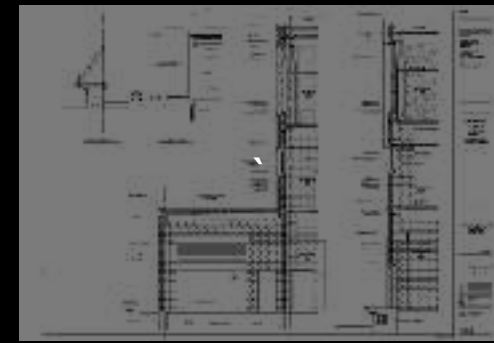
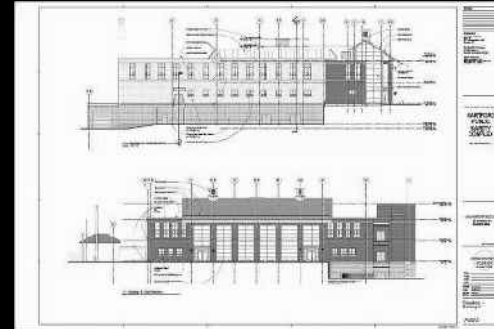
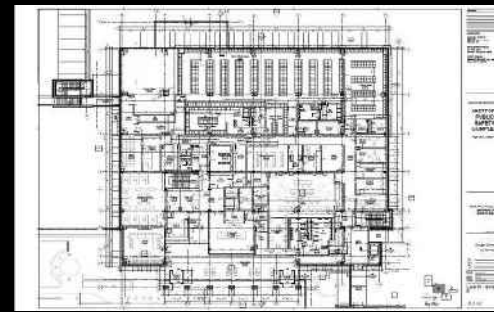
Hartford CT: Senior Designer for 130,000 sf complex for consolidated police, fire, and emergency services. This multi-department facility consists of 90,000sf new, space linked to 40,000sf in a historic former school. The project serves to infill derelict blocks linking downtown and surrounding neighborhoods bringing public safety presence back into the traditionally dense historic city core. First project in office to be comprehensively produced in REVIT for concept development, design development, and construction documentation.

with JCI Architecture

Hartford Public Safety Complex



Collaborative Design Process



OVER SHEET - SERVICES		
NO.	DESCRIPTION	DATE
1	ARCHITECTURAL SERVICES	10/15/11
2	CONSTRUCTION ADMINISTRATION	10/15/11
3	PROJECT MANAGEMENT	10/15/11
4	GENERAL CONTRACTOR	10/15/11
5	MECHANICAL CONTRACTOR	10/15/11
6	ELECTRICAL CONTRACTOR	10/15/11
7	PLUMBING CONTRACTOR	10/15/11
8	CONCRETE CONTRACTOR	10/15/11
9	IRONWORK CONTRACTOR	10/15/11
10	PAINT CONTRACTOR	10/15/11
11	LANDSCAPE CONTRACTOR	10/15/11
12	GENERAL CONTRACTOR	10/15/11
13	GENERAL CONTRACTOR	10/15/11
14	GENERAL CONTRACTOR	10/15/11
15	GENERAL CONTRACTOR	10/15/11
16	GENERAL CONTRACTOR	10/15/11
17	GENERAL CONTRACTOR	10/15/11
18	GENERAL CONTRACTOR	10/15/11
19	GENERAL CONTRACTOR	10/15/11
20	GENERAL CONTRACTOR	10/15/11
21	GENERAL CONTRACTOR	10/15/11
22	GENERAL CONTRACTOR	10/15/11
23	GENERAL CONTRACTOR	10/15/11
24	GENERAL CONTRACTOR	10/15/11
25	GENERAL CONTRACTOR	10/15/11
26	GENERAL CONTRACTOR	10/15/11
27	GENERAL CONTRACTOR	10/15/11
28	GENERAL CONTRACTOR	10/15/11
29	GENERAL CONTRACTOR	10/15/11
30	GENERAL CONTRACTOR	10/15/11
31	GENERAL CONTRACTOR	10/15/11
32	GENERAL CONTRACTOR	10/15/11
33	GENERAL CONTRACTOR	10/15/11
34	GENERAL CONTRACTOR	10/15/11
35	GENERAL CONTRACTOR	10/15/11
36	GENERAL CONTRACTOR	10/15/11
37	GENERAL CONTRACTOR	10/15/11
38	GENERAL CONTRACTOR	10/15/11
39	GENERAL CONTRACTOR	10/15/11
40	GENERAL CONTRACTOR	10/15/11
41	GENERAL CONTRACTOR	10/15/11
42	GENERAL CONTRACTOR	10/15/11
43	GENERAL CONTRACTOR	10/15/11
44	GENERAL CONTRACTOR	10/15/11
45	GENERAL CONTRACTOR	10/15/11
46	GENERAL CONTRACTOR	10/15/11
47	GENERAL CONTRACTOR	10/15/11
48	GENERAL CONTRACTOR	10/15/11
49	GENERAL CONTRACTOR	10/15/11
50	GENERAL CONTRACTOR	10/15/11
51	GENERAL CONTRACTOR	10/15/11
52	GENERAL CONTRACTOR	10/15/11
53	GENERAL CONTRACTOR	10/15/11
54	GENERAL CONTRACTOR	10/15/11
55	GENERAL CONTRACTOR	10/15/11
56	GENERAL CONTRACTOR	10/15/11
57	GENERAL CONTRACTOR	10/15/11
58	GENERAL CONTRACTOR	10/15/11
59	GENERAL CONTRACTOR	10/15/11
60	GENERAL CONTRACTOR	10/15/11
61	GENERAL CONTRACTOR	10/15/11
62	GENERAL CONTRACTOR	10/15/11
63	GENERAL CONTRACTOR	10/15/11
64	GENERAL CONTRACTOR	10/15/11
65	GENERAL CONTRACTOR	10/15/11
66	GENERAL CONTRACTOR	10/15/11
67	GENERAL CONTRACTOR	10/15/11
68	GENERAL CONTRACTOR	10/15/11
69	GENERAL CONTRACTOR	10/15/11
70	GENERAL CONTRACTOR	10/15/11
71	GENERAL CONTRACTOR	10/15/11
72	GENERAL CONTRACTOR	10/15/11
73	GENERAL CONTRACTOR	10/15/11
74	GENERAL CONTRACTOR	10/15/11
75	GENERAL CONTRACTOR	10/15/11
76	GENERAL CONTRACTOR	10/15/11
77	GENERAL CONTRACTOR	10/15/11
78	GENERAL CONTRACTOR	10/15/11
79	GENERAL CONTRACTOR	10/15/11
80	GENERAL CONTRACTOR	10/15/11
81	GENERAL CONTRACTOR	10/15/11
82	GENERAL CONTRACTOR	10/15/11
83	GENERAL CONTRACTOR	10/15/11
84	GENERAL CONTRACTOR	10/15/11
85	GENERAL CONTRACTOR	10/15/11
86	GENERAL CONTRACTOR	10/15/11
87	GENERAL CONTRACTOR	10/15/11
88	GENERAL CONTRACTOR	10/15/11
89	GENERAL CONTRACTOR	10/15/11
90	GENERAL CONTRACTOR	10/15/11
91	GENERAL CONTRACTOR	10/15/11
92	GENERAL CONTRACTOR	10/15/11
93	GENERAL CONTRACTOR	10/15/11
94	GENERAL CONTRACTOR	10/15/11
95	GENERAL CONTRACTOR	10/15/11
96	GENERAL CONTRACTOR	10/15/11
97	GENERAL CONTRACTOR	10/15/11
98	GENERAL CONTRACTOR	10/15/11
99	GENERAL CONTRACTOR	10/15/11
100	GENERAL CONTRACTOR	10/15/11

Portfoli

Stephen C. Parsons, AIA, NCARB, LEED AP

with JCI Architecture

Greenwich Public Safety Complex

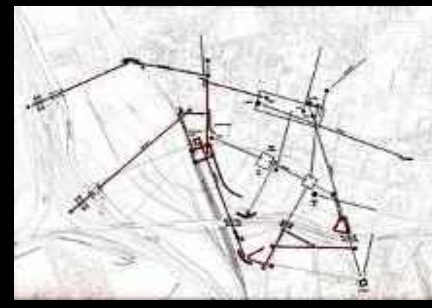
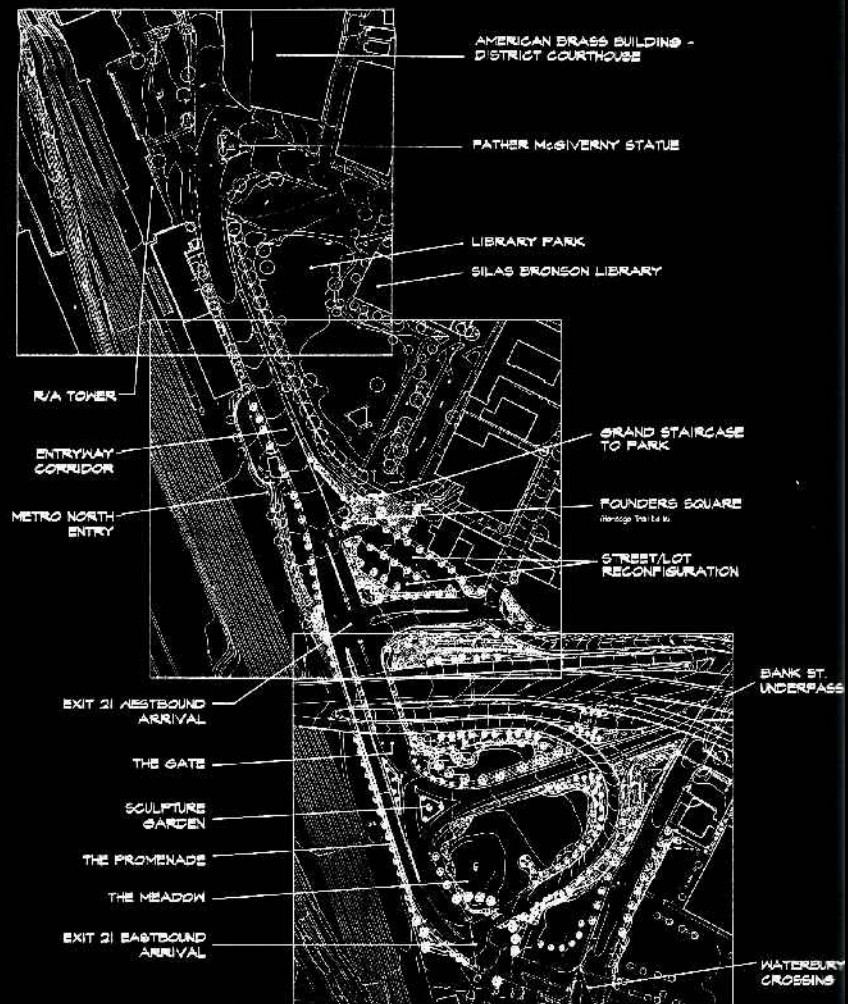
Town of Greenwich CT: Senior Designer for new public facility contextually fit in Greenwich historic downtown. Resolved design for 60,000sf multi-department building and associated structured parking. Shell and public interiors computer modeled throughout design process. Fully coordinated effort between REVIT for design visualization and AutoCAD for production.



as Parsons Giampietro Consultants

Brass Trail Gateway

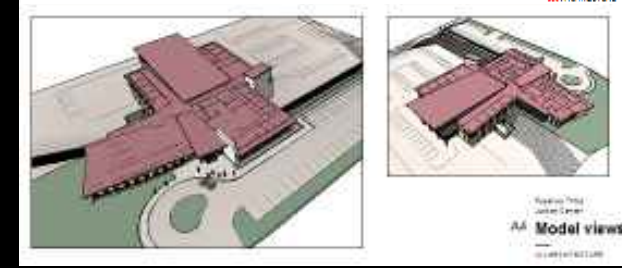
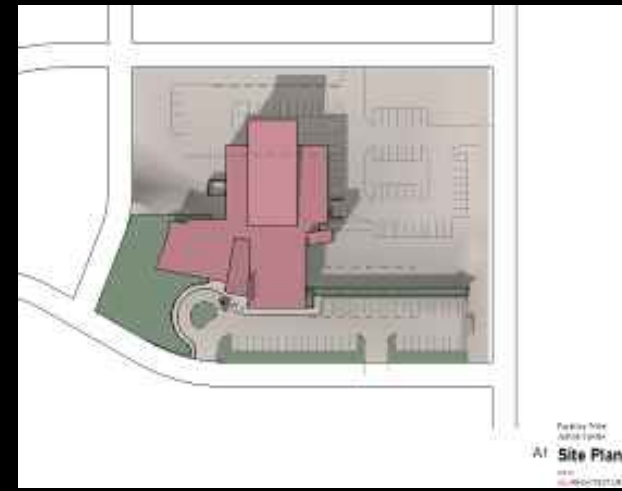
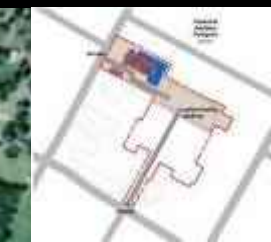
- Waterbury CT: Waterbury Foundation / Naugatuck Valley Development Corp: Originator, Grant Writer, Master Planner, Designer. ISTEA funded project mitigated highway impact and unified streetscape at approaches to historic downtown. Worked in collaboration with community leaders, planners as well as landscape, civil and traffic consultants.



with JCI Architecture

Public Safety Studies

- Puyallup Tribe Justice Facility Study, Tacoma WA
- New Castle Public Safety Study, Chappaqua, NY
- East Providence RI Public Safety Study
- Wallingford CT, Weston MA, Northampton MA



EDUCATION PROJECTS

- Bennett Middle School, Wicomico Co. MD – senior project architect
- SUNY / Suffolk Community College Library – design coordinator / modeler
- Glastonbury CT High School – senior project designer
- Plainville CT Schools - senior project designer
- Hartford CT Public High School – project architect
- Daniel Hand High School, Madison CT – senior project designer
- Naugatuck Valley College Leever Atrium, Waterbury CT – senior project designer
- Connecticut Community-Technical Colleges on-call projects – project designer
- Nyack NY High School – project architect
- Honeoye Falls NY Middle School – project architect
- Livonia NY Middle School – project architect
- Middle Island NY High School – project designer



with JCI Architecture

SUNY Suffolk Community College Library

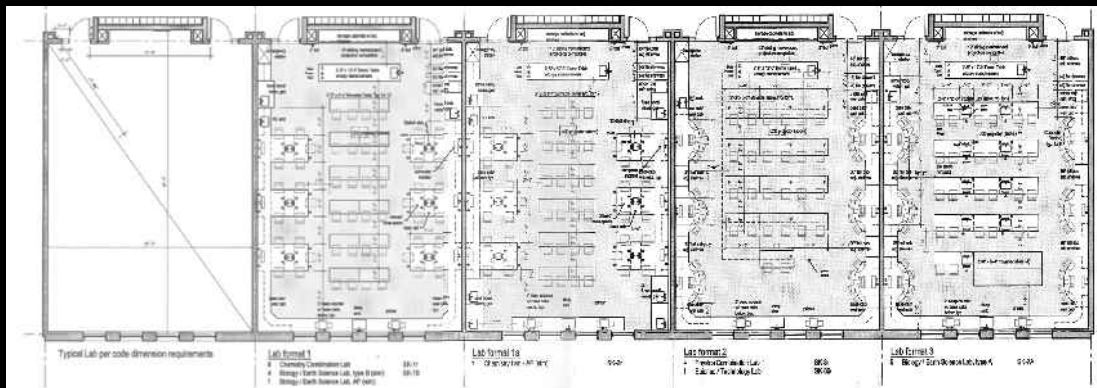
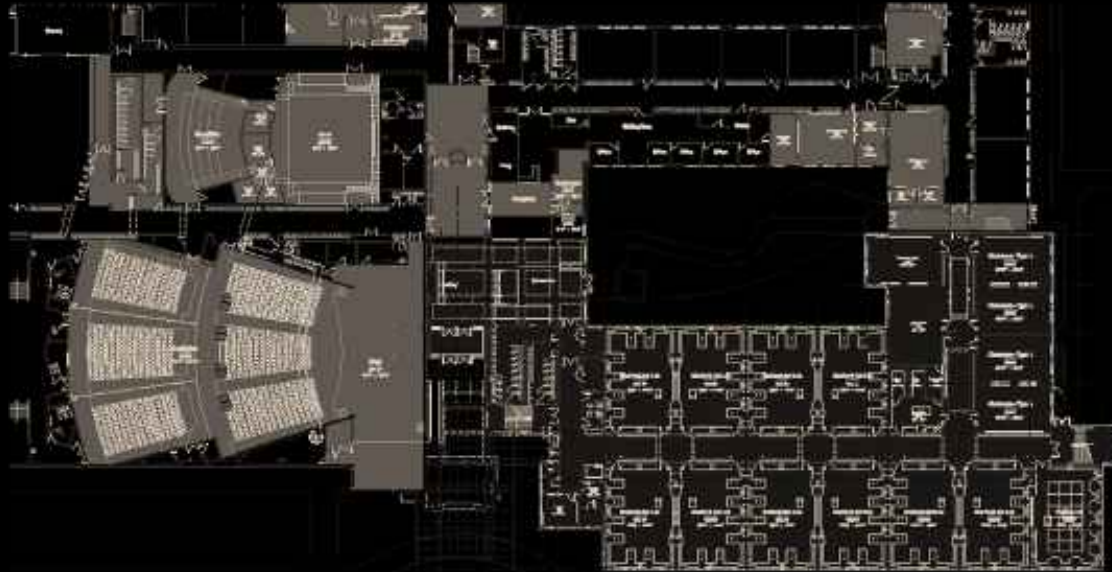
Riverhead NY: Collaboration sketching and modeling with team of designers for a new 40,000 library. The new facility serves as unifying central element on a growing Long Island campus on the edge of the Pine Barrens.



with JCI Architecture

Glastonbury High School

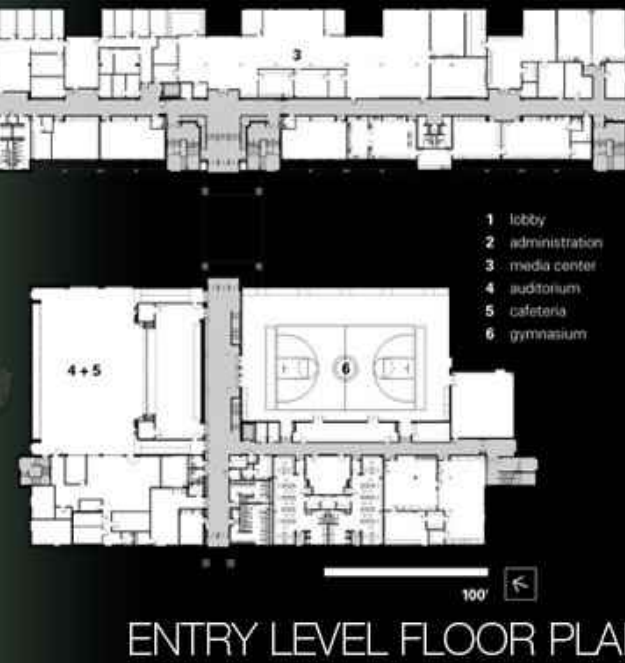
Glastonbury CT: Senior Design Architect for 72,000 sf additions, 78,000 sf renovations clarifying and reorganizing the sprawling existing facility. The largest addition re-images the school's main entry and introduces state-of-the-art Science facilities. New Cafeteria and Media Center additions anchor the ends of the irregular complex. Every academic department is realigned and expanded in this multi-phase project.



with JCI Architecture

Daniel Hand High School

Madison CT: Senior Designer for new state-of-the-art 220,000sf, 1250 student facility. The compact, parallel academic and core buildings are linked across a unifying landscaped street by pedestrian bridge serving as student commons. Design elements for school allude to motifs of the original Madison Academy.



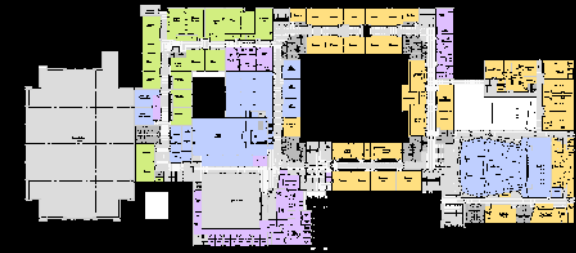
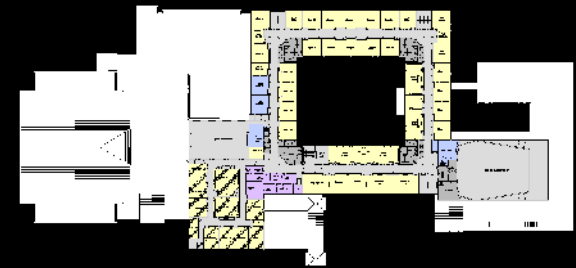
- American School & University Outstanding Project Citation
- Assoc of School Business Officials International Certificate of Excellence
- CT Building Congress Project Team Award: 1st Place for K-12
- National School Boards Assn Learning by Design Citation
- American Assoc of School Administrators Architectural Jury Award



with JCI Architecture

Hartford Public High School

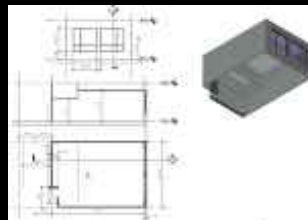
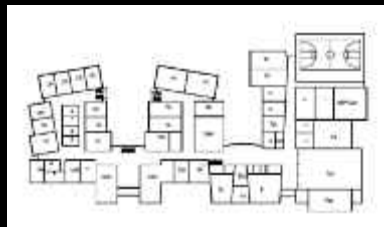
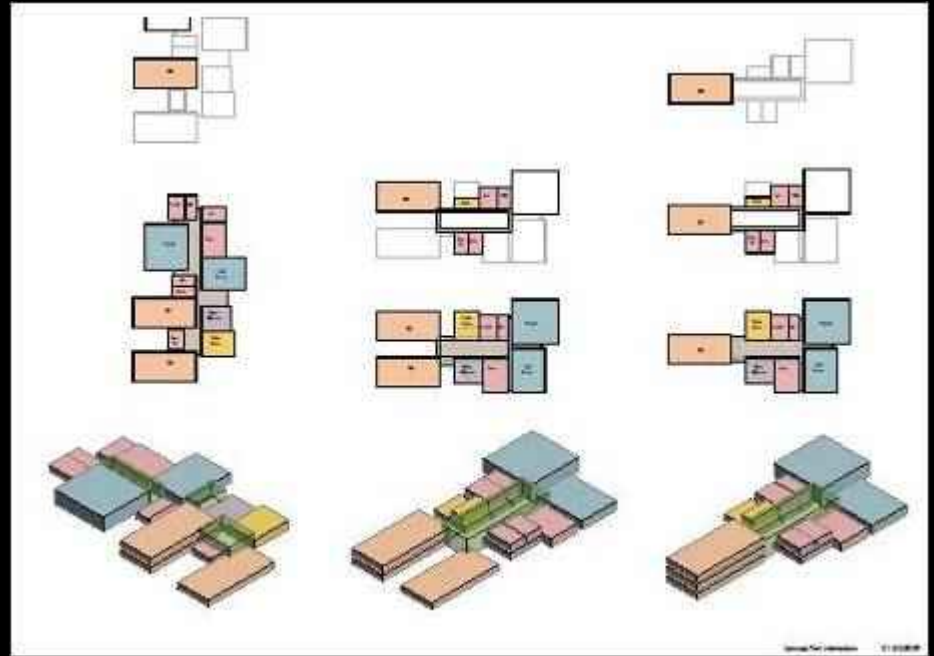
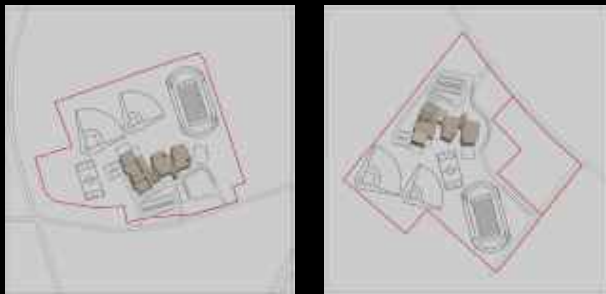
Senior Designer and programming coordinator for multi-phase redevelopment of the high school, comprising 110,000sf in additions and 315,000sf of major renovation. The project completely updates the existing with extensive new core functions and new technology infrastructure. The facility, reconfigured for new smaller learning communities within the larger school, was recently featured on the [News Hour](#) on PBS.



with Hord Coplan Macht

Bennett Middle School

Wicomico County, MD: Project architect for schematic design of 140,000sf, 630 student school replacing existing. Client's goals for project include achieving LEED Silver and producing project entirely within REVIT. School is to consist of 3 distinct houses as well as core facilities that are accessible for community use.



HOUSING / MIXED USE PROJECTS

Seabury Independent Living Community, Bloomfield CT – senior project designer

Rosedale of Glastonbury Assisted Living – senior project designer

Village at Mariner's Point, East Haven CT – senior project designer

Village Retirement Communities Projects – senior project designer

Series of Design/Build Single Family Homes, Efran Development, Fairfield CT

Series of Design/Build Single Homes for Calabrese Development, Watertown CT

Additions to 6 Athena Health Care System Nursing Facilities – project architect

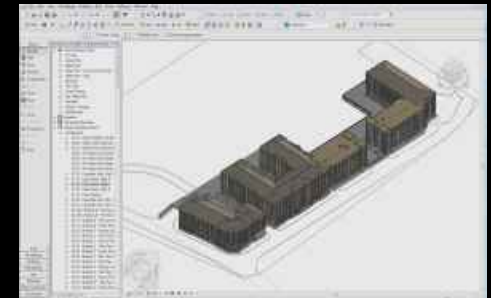
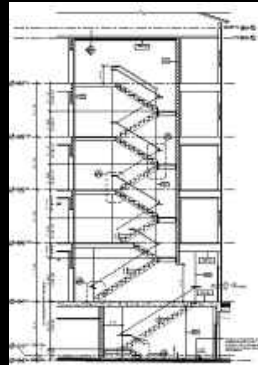
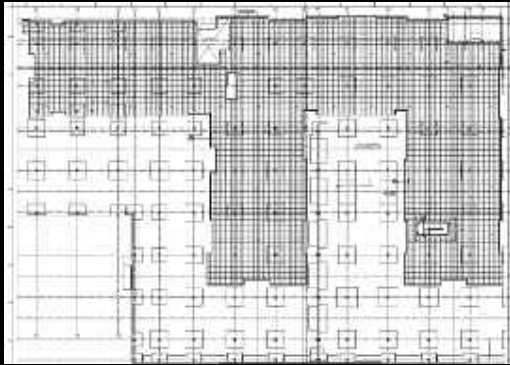
Woodlake Long Term Care, Westerly RI Housing Association Assisted Living, Briarwood Community independent Living



with Hord Coplan Macht

Hawthorne Housing, phase I

Laurel MD. Member of production team. Project consists of 296 apartments and 350,000sf in a mixed-use setting. Podium format used for space and cost efficiencies on this greyfield redevelopment. Extensive REVIT modeling used for project visualization, resolution of building forms and systems, scheduling, and detailing.



with JCI Architecture

Corbin / Pinnacle Housing

New Britain, CT: Connecticut Housing Finance Authority.
Master Planner / Designer for winning competition proposal, 320 renovated and new affordable residential units on two existing 1950's public housing sites.
Developed urban configuration defining pedestrian friendly streets lined with individualized houses with porches, and each with private back yards and parking.
Full range of prototype units adhere to CHFA guidelines.



with JCI Architecture

Seabury Independent Living

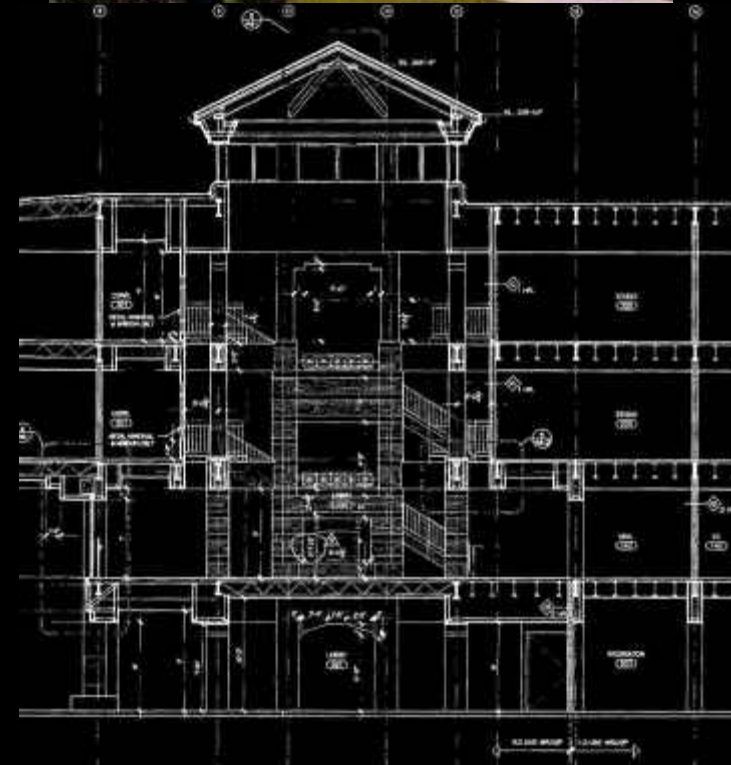
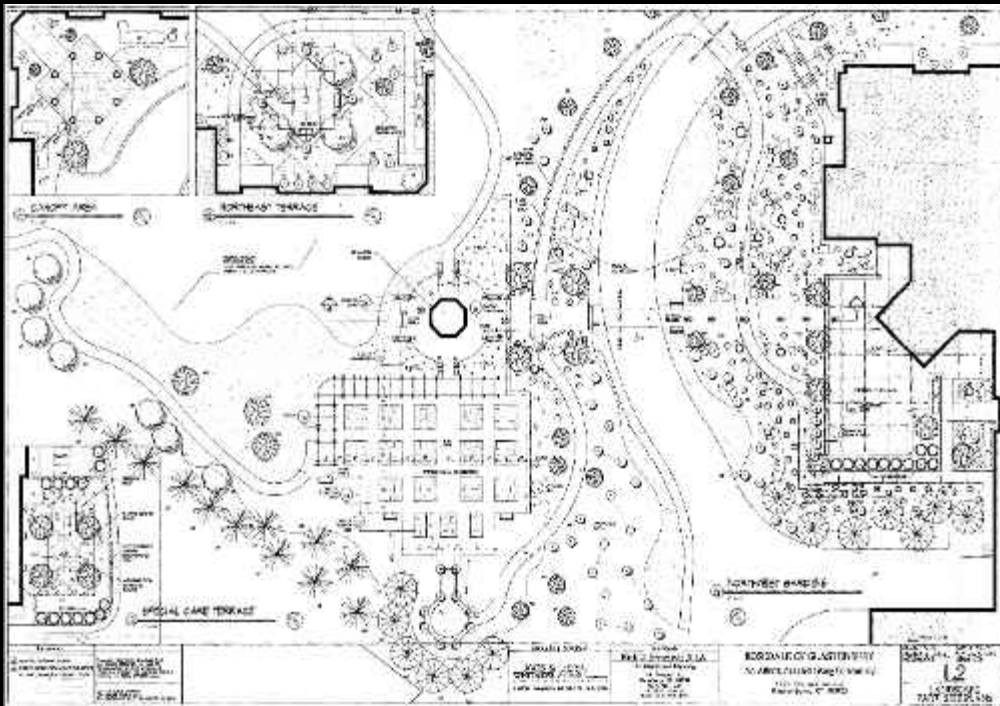
Bloomfield CT: . Senior Project Designer for major expansion to existing continuing care campus. 45 new residential units fulfill high-end luxury unit market segment. Design includes large multi-story common room, pool and health club facility, and shared landscaped courtyard and gardens.



with Ames & Whitaker

Rosedale at Glastonbury

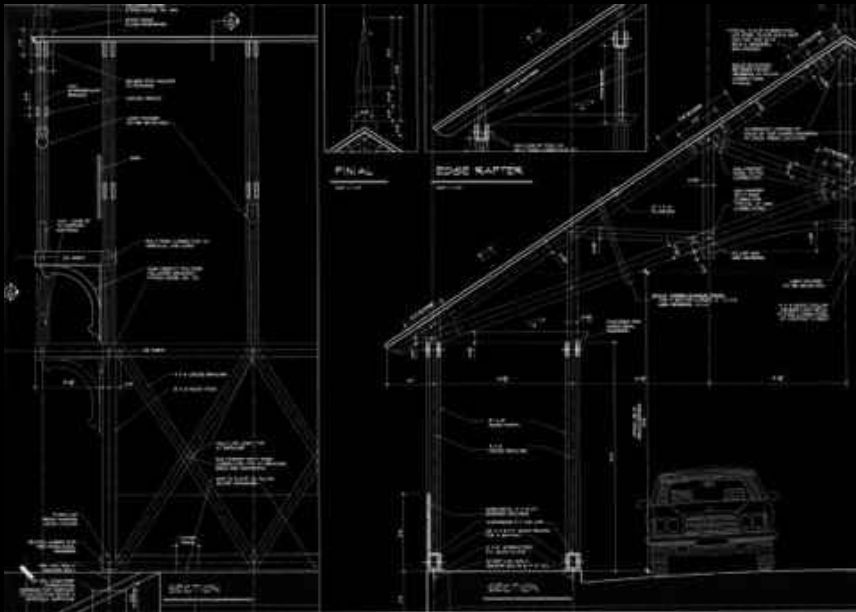
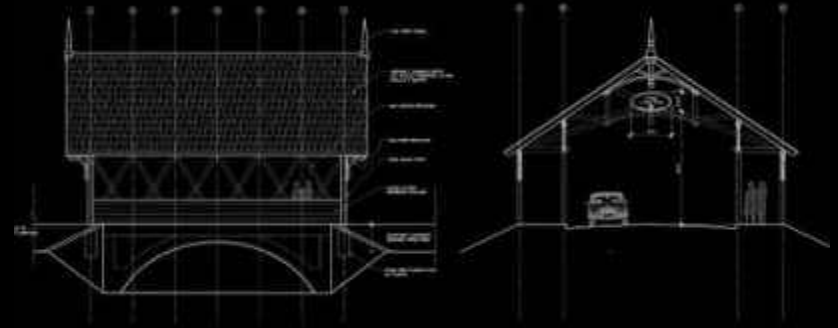
Glastonbury CT: Project Architect for 96 unit facility extending continuum of care for existing health care campus to assisted living and Alzheimer care. Variety of unit types and areas with independent circulation and dedicated public facilities. Extensive design for a wide range of exterior environments.



with Ames & Whitaker

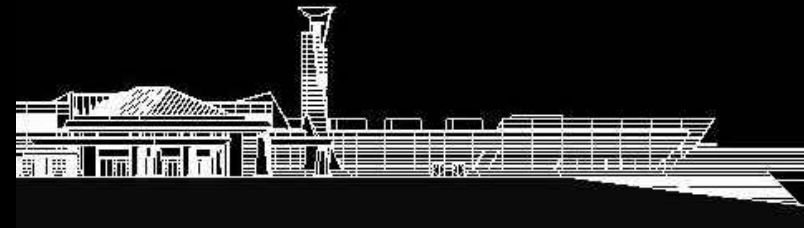
Bridge Gateway for Village at East Farms

Signature Covered Bridge, styled after Eric Sloane imagery



RECREATION / MIXED USE

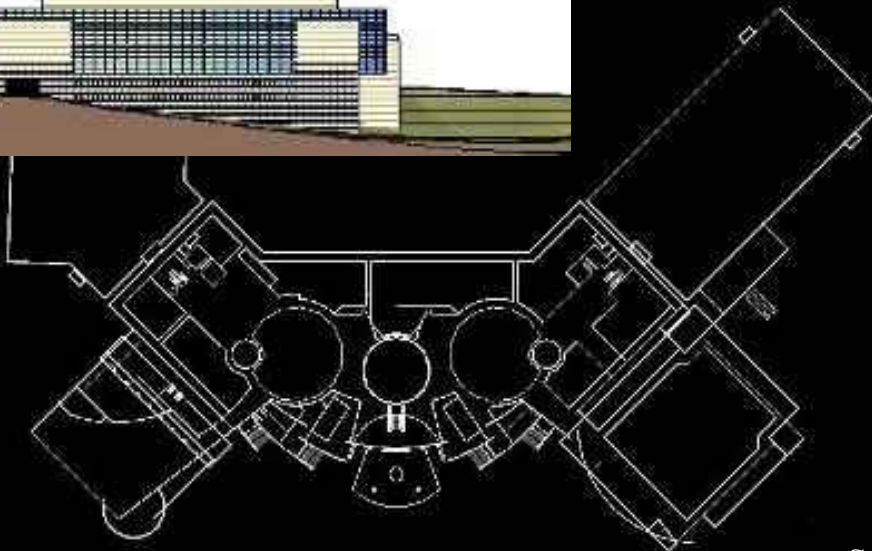
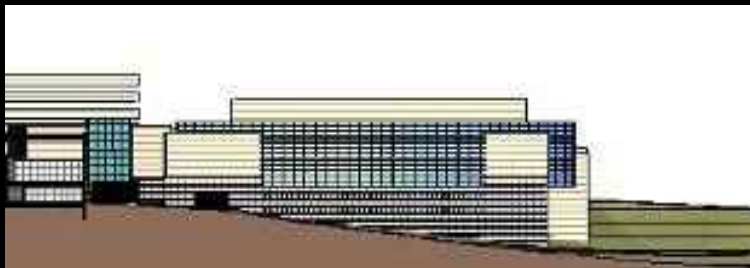
- Table Mountain Casino, Friant CA – designer, modeler
- Mohegan Sun at Pocono Downs, Wilkes Barre PA – master planner, design team leader
- Menominee Project Eagle, Kenosha WI – master planner
- Seneca Allegany Casino, Salamanca NY – project designer
- Divi Divi Hotel Corp: series of hotels, timeshares, resorts in New York and the Caribbean
- Ramada Hotel expansion, Ithaca NY



with JCI Architecture

Table Mountain Casino

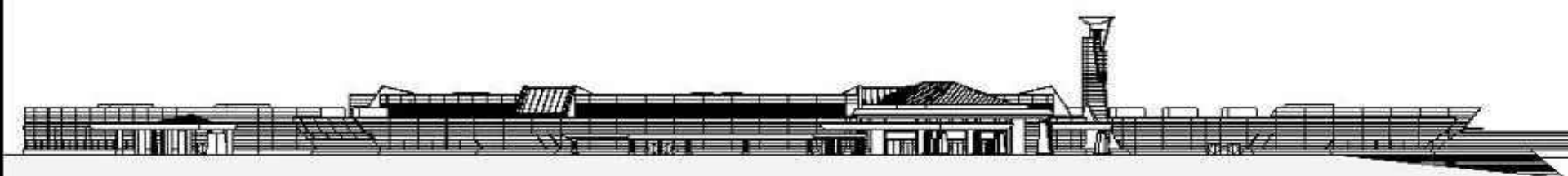
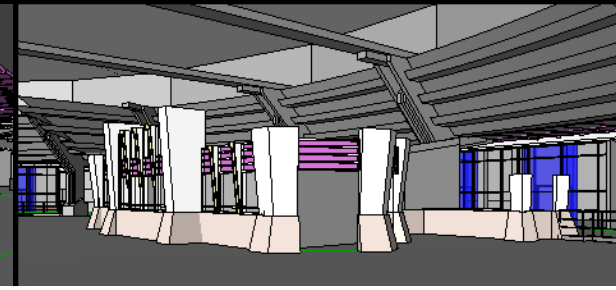
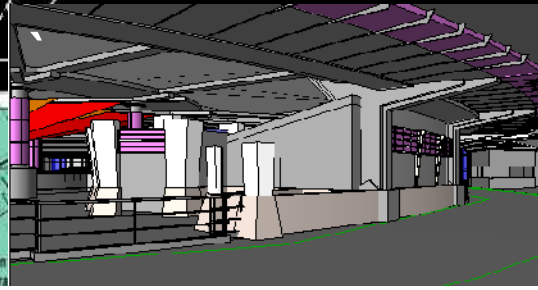
Friant CA: Member of collaborative project team. REVIT modeled 400,000sf building and site to visualize and resolve strategies for project phasing, massing, aesthetic, circulation, and access. Exports from REVIT served as the springboard for further refined aesthetic development of the casino in renderings as well as plan and elevation work in AutoCAD



with JCI Architecture

Mohegan Sun at Pocono Downs

Wilkes Barre, PA: 2004-2007. Design team leader and coordinator for design development for new 580,000 sf gaming facility at existing racetrack. Participated in frequent coordination/strategy sessions with consultants, owner, and design team. Building and site design modeled in REVIT software for resolution of building forms and interior configuration through the design development phase, including plans, area analysis, sections, elevations, perspectives, and walk-throughs



with JCI Architecture

Seneca Allegany Casino

Salamanca, NY: Exterior façade development in AutoCAD and REVIT. Themes for Porte Cochere allude to Native American textile patterns. Visualizations included walkthroughs to experience entry sequences.



INDUSTRIAL / CORPORATE

Light Rail Operations + Maintenance Facility, Metro Rail, St. Paul MN

Moog Aerospace and Industrial Facilities, East Aurora NY

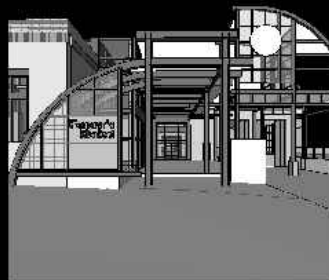
MacDermid Coatings, Masterplan, Waterbury CT

Mitsubishi Dealership, Watertown CT

Design/Build Industrial Plants in Central CT, including:

Koster Keunan, Morse Watchman, Echo Manufacturing, Nutmeg
Eyelet, Neoperl, Siemen, LesCare, Philson

SNET operator service facilities, 3 locations



Firms

AECOM, Baltimore MD

Architect, Transportation Facilities

Hord Coplan Macht, Baltimore MD

Project Architect: Education, Housing, Municipal, Institutional

JCJ Architecture, Hartford CT

Senior Project Designer:
Education, Civic, Public Safety, Senior Housing, Hospitality

Ames & Whitaker, Waterbury CT

Project Architect/Manager:
Senior Housing, Civic, Federal, Industrial, Corporate, Religious

InterCAD, Waterbury CT

Construction Documentation: Industrial, Corporate, Residential

Straus Edwards Associates, Woodbury CT

Project Architect/Manager: Municipal, Education, Corporate

Thomas Associates, Ithaca NY

Intern, Project Architect: Education

Education

Bachelor of Architecture, Cornell University

Mentors: Alex Kira, John Zissovici, Lee Hodgden, Werner Guerner,
George Hascup, Henry Richardson, John Shaw, Michael Tomlin,
Eric Barendt, John Reys, Mario Shack, K.C. Parsons



Community Involvement

Baltimore Community Design Center

Concepts for Westport Urban Plan

Connecticut Forest & Parks Association, Director

Advocate for Urban Forestry initiatives

Strategic advisor for renewed mission and branding

Advisor on Connecticut Walk Book concepts

Community Vision for Waterbury

Advocate, organizer, planner, grant writer for community planning initiatives

Cheshire Historic District, Commissioner

Charter member

Co-writer of new regulations

Waterbury First Church Housing, Director

Advisor on facility needs

Post University Adjunct Professor

Teacher, AutoCAD for Interior Design

NVDC Design Review Committee

State appointed reviewer for regional development corporation

Community Vision for Waterbury

Advocate, organizer, planner, grant writer for community planning initiative

Tompkins County Library Board, Director

Advisor for facility growth needs

