



## REPRESENTATIVE PROJECTS

*Stephen Parsons, AIA, LEED AP*

LEARN  
LIVE  
HEAL  
PLAN  
WORK  
PLAY  
ORGANIZE  
CONNECT

# LEARN

Senior Project Designer

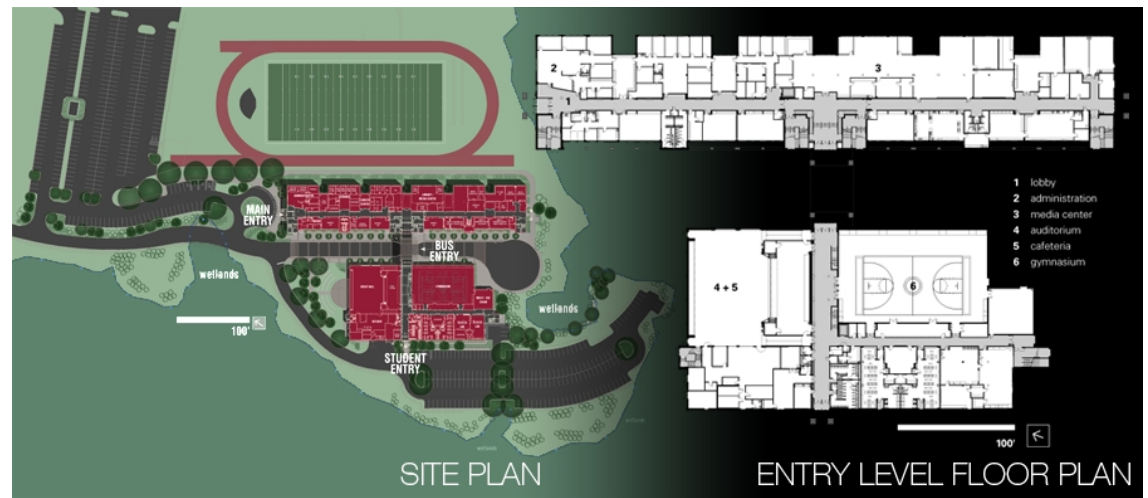
**Daniel Hand High School,  
Madison CT**

(with JCJ Architecture)

Award winning project for new  
220,000sf, 1250 facility.

Compact, parallel academic and  
core buildings with linking bridge  
commons

Motifs of the original historic  
Academy. Extensive owner input  
and design team collaboration.



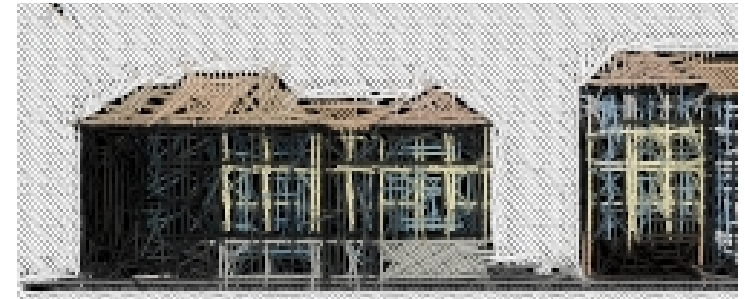
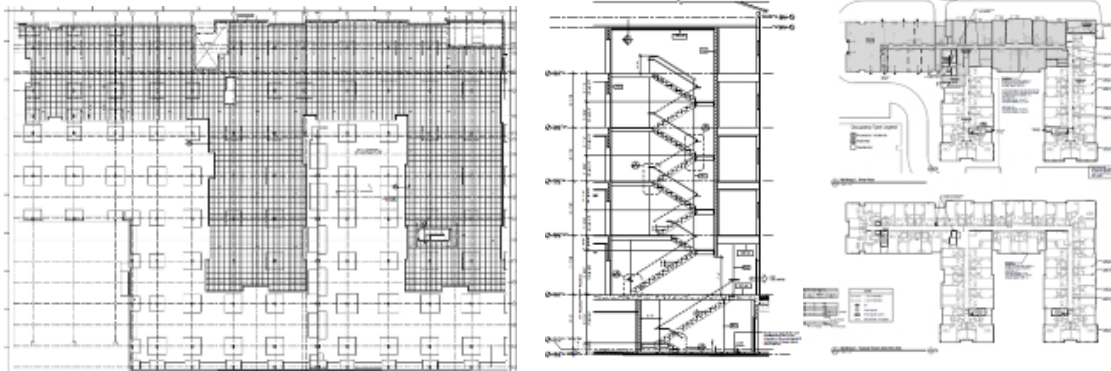
# LIVE

Key Contributor to Design Development and Documentation

## Hawthorne Housing / Mixed Use, Laurel MD

(w/Hord Coplan Macht)

96 apartments at 350,000 sf in a mixed-use setting. Podium configuration for space and cost efficiencies on this grayfield redevelopment. REVIT for project visualization, resolution of building forms, systems, vertical elements, scheduling, and detailing.



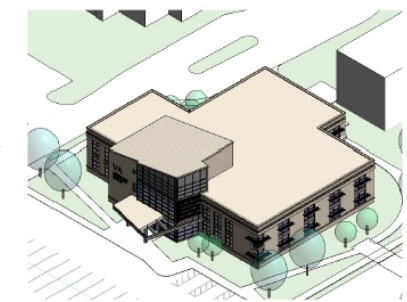
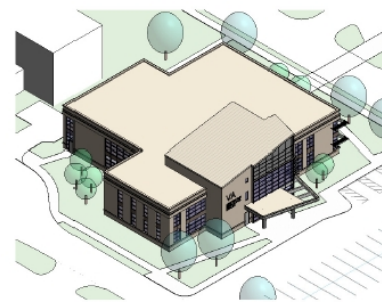
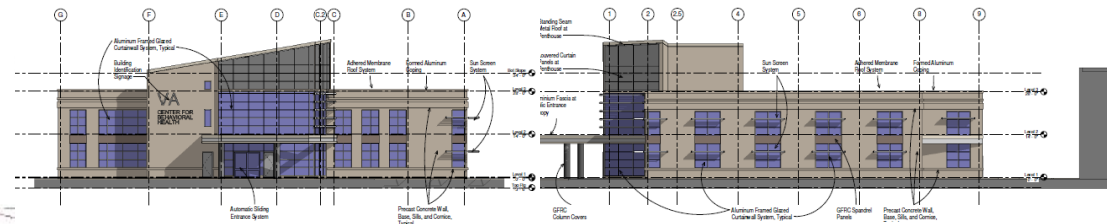
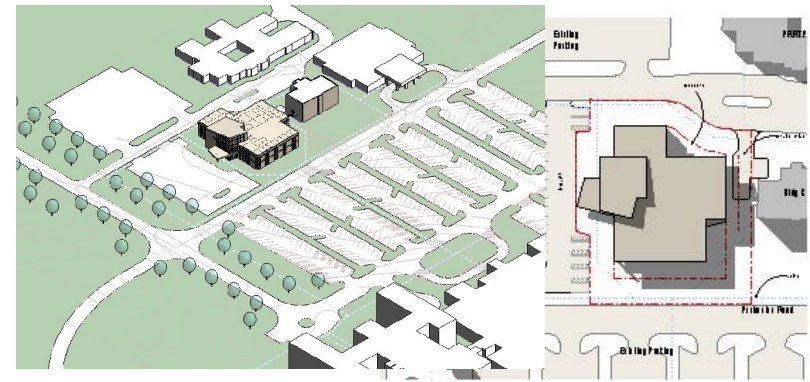
# HEAL

Project Designer / Project Manager

**Mental Health Services Building on Midwestern Hospital Campus**

(w/ Ernest Bland Associates)

27,000 sf facility for consolidation and expansion of mental health services. Project comprehensively designed and documented in REVIT.



- Department Legend
- Day Treatment
  - Mental Health Clinic
  - Lobby
  - Shared and Learning
  - Special Programs
  - Building Support
  - Vertical Circulation
  - Core



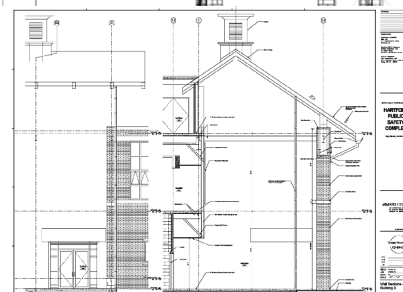
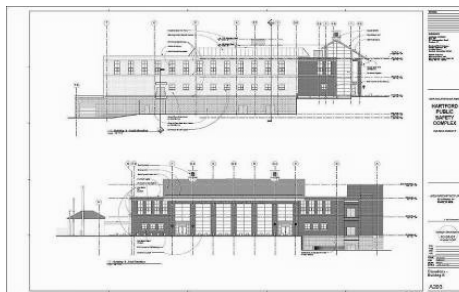
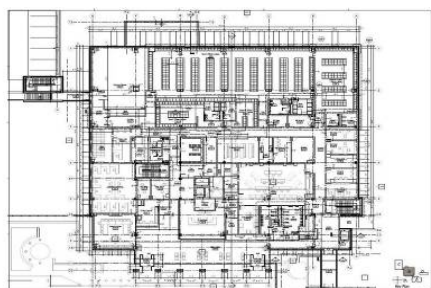
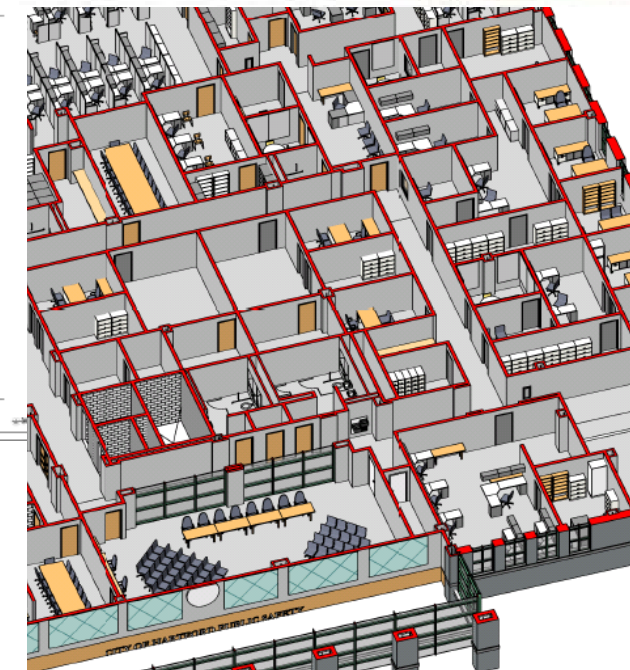
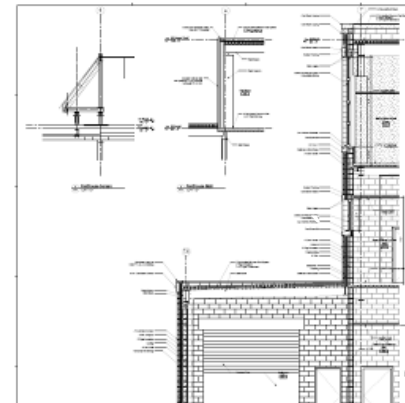
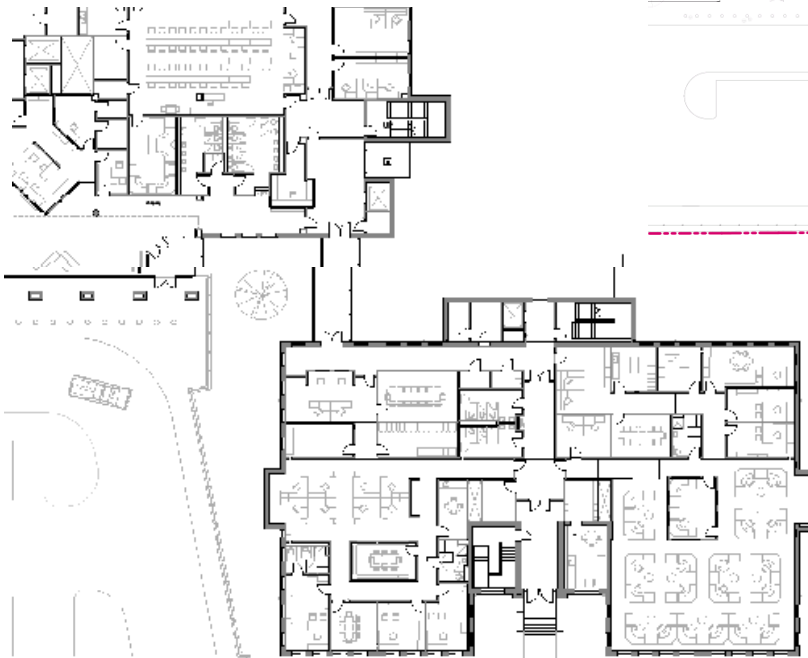
# WORK

Senior Project Designer

## Hartford Public Safety Complex

(w/JCJ Architecture)

Design/Design Development for 130,000 sf complex consolidating police, fire, and emergency services. 90,000 sf new, space linked to 40,000 sf in 1890's adaptively reused school in inner city neighborhood transitional to downtown.



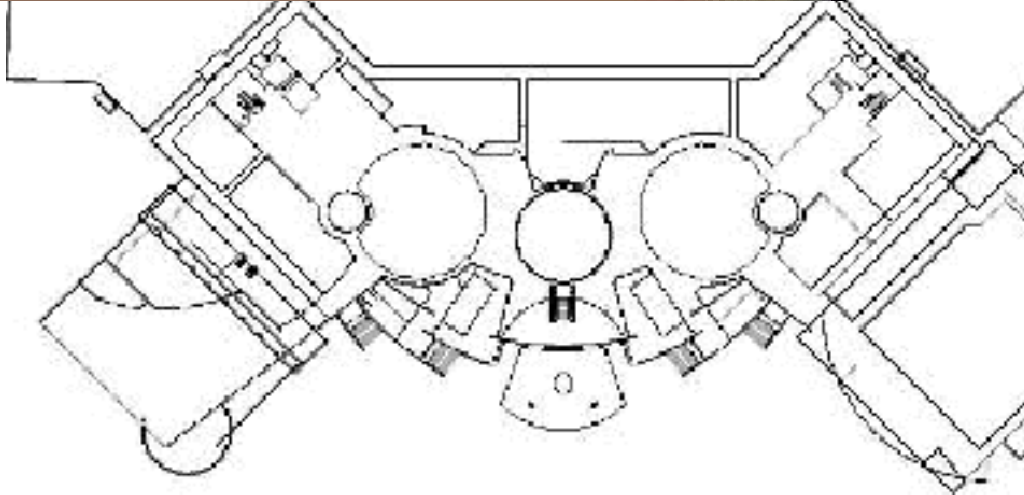
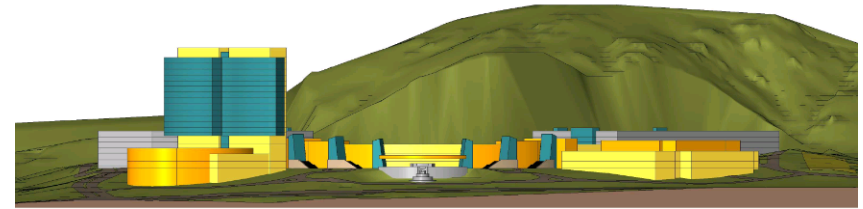
# PLAY

Key contributor to design team for REVIT modeling, massing concepts

## Table Mountain Casino, Friant CA

(w/ JCJ Architecture)

Design visualization for 400,000 Native American financed gaming facility to resolve configuration, circulation, phasing, massing, grad conditions, access and overall aesthetic.



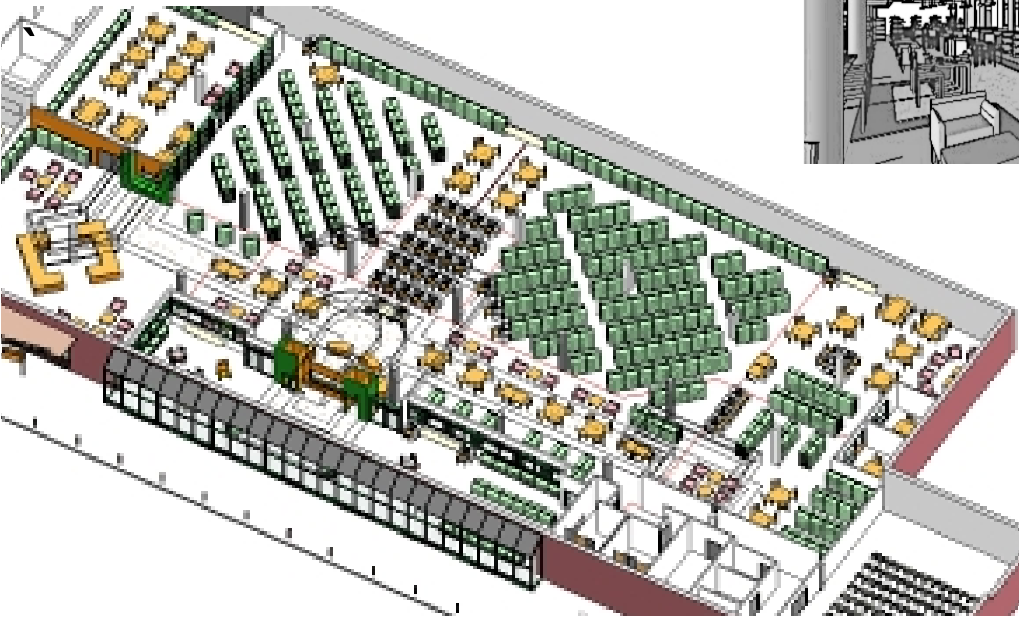
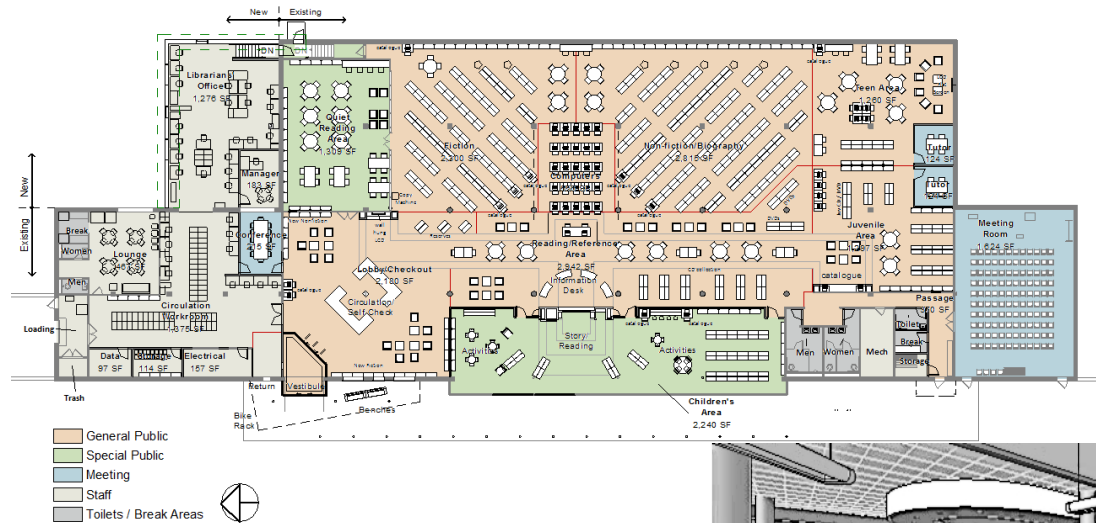
# ORGANIZE

Project Designer / Manager

**Baltimore County Public Library: Cockeysville Branch**

(w/ Hord, Coplan, Macht)

Design for expansion and reconfiguration of 24,000 sf library. Reorganization of plan for improved public space, increased collection and seating capacity, improved support functions.



General Shelving Unit Type	Count	Length	shelves per unit	Lf
<b>Children's Area</b>				
Bookshelf Double Faced: 42H	26	3' - 0"	8	485' - 0"
Bookshelf Single Faced: 42H	16	3' - 0"	3	144' - 0"
				612' - 0"
<b>Fiction</b>				
Bookshelf Double Faced: 66H	64	3' - 0"	10	1920' - 0"
Bookshelf Single Faced: 66H	14	3' - 0"	5	210' - 0"
				2130' - 0"
<b>Juvenile Area</b>				
Bookshelf Double Faced: 66H	18	3' - 0"	10	450' - 0"
Bookshelf Single Faced: 66H	16	3' - 0"	5	240' - 0"
				720' - 0"
<b>Lobby/Checkout</b>				
Bookshelf Double Faced: 66H	3	3' - 0"	10	90' - 0"
Bookshelf Single Faced: 42H	10	3' - 0"	3	90' - 0"
Bookshelf Single Faced: 66H	13	3' - 0"	5	195' - 0"
				375' - 0"
<b>Non-Fiction/Biography</b>				
Bookshelf Double Faced: 66H	95	3' - 0"	10	2850' - 0"
Bookshelf Single Faced: 66H	21	3' - 0"	5	315' - 0"
				3165' - 0"
<b>Teen Area</b>				
Bookshelf Double Faced: 66H	5	3' - 0"	10	150' - 0"
Bookshelf Single Faced: 66H	5	3' - 0"	5	75' - 0"
				225' - 0"
				7227' - 0"

"It's magnificent," said Baltimore County Executive Jim Smith shortly before branch manager Mollie Fein officially declared the branch open to the public.

"I think it's great," 2nd District County Council member Bryan McIntire said.

"There must be library engineers who lay it out so nicely. It's a pleasant, airy atmosphere."

"Gosh, how could you not be impressed?" said John Holman, a member of the Baltimore County Public Library Board of Trustees. "It's a showcase."



# CONNECT

Master Planner, Urban Designer

## Brass Trail Gateway Corridor, Waterbury CT

Originated concept, obtained funding, led multi-disciplinary project team, collaborated with a wide range of stakeholders to form a coherent landscaped gateway corridor to a historic city center.

